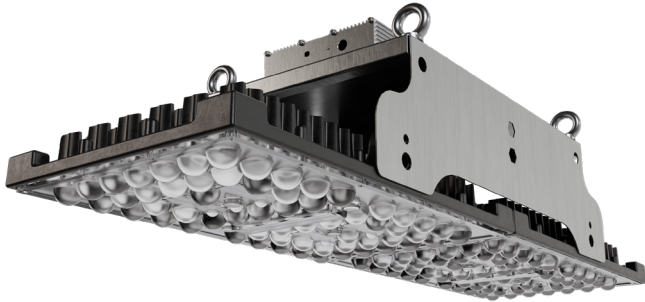


SPECIFICATION

Harvester 250



Improving crop health & reducing energy consumption, the Harvester range are die-cast luminaires that are engineered with precision and durability. Offering unparalleled performance and versatility for indoor plant cultivation. With a unique design that ensures even light distribution, with adjustable spectral blends that cater to your plants' specific needs.



Features

- Optimal light output angle
- Directly replaces 400W SON T Agro & MH lamps
- Dimming as standard
- Daylight linking system
- Easily replaceable drivers
- IP66 water proof design
- Life span expected 75,000 hours +
- Robust design, easy to maintain
- Customisable & crop specific spectra available
- Asymmetric lens available for even plant bed distribution

Applications

Horticultural

Options and Accessories

WL	Wireless Daylight Linked Control System
SUS	2m Suspension Cord Kit
BKT	Unistrut Hook Bracket
AD	0-10V Dimming
DD	DALI Dimming
PD	PWM Dimming
C	Medicinal Cannabis Spectra
S	Solar Spectra
LD	Flying Lead Or Weiland RST2013S

Technical Details

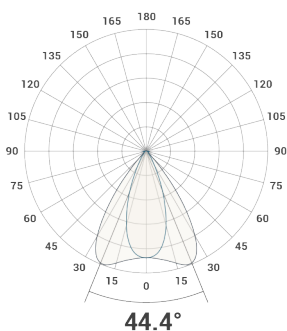
Specification

Light Output PPF ($\mu\text{mol/s}$)
 Calculated Efficiency ($\mu\text{mol/J}$)
 PPF/D ($\mu\text{mol/m}^2/\text{s}$)
 Colour Rendering Index
 Light Output Depreciation
 Power Input
 Voltage Range
 Frequency Input Range
 System Weight Complete
 Ingress Protection
 Cooling Method
 Operating Temperature

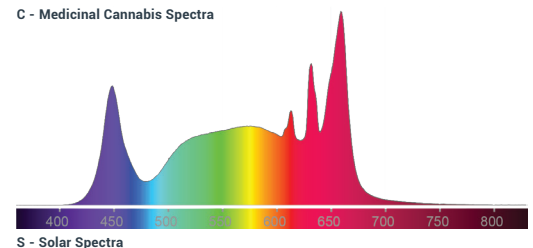
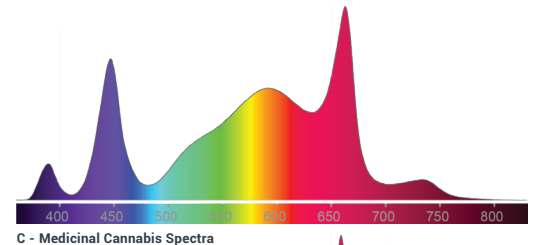
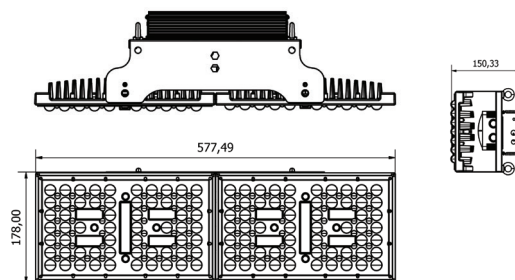
HAV-250

592.5
 2.37
 760.6
 90+
 75,000 hrs L90 B10
 250W
 100-240V AC | Optional - 249-528V AC
 50-60 Hz
 5.61KG
 IP66
 Passive
 -5°C – 40°C

Photometric



Dimensions



Please Note: Product specifications are subject to change without notice. Product supplied may differ slightly in appearance from images shown on this website. Diamond LED Lighting reserve the right to update product specifications.

Tel: 01260 292 640 | Fax: 01260 279 116 | E-mail: sales@diamondledlighting.co.uk | Web: www.diamondledlighting.co.uk