

LU5-BAR

Solar LED Wall Light

Specification & Instructions



Product Name	LU5-BAR
Colour	Black
Date	2023-5-3
Version	REV 1.0

CE RoHS

Prior Features & Benefit

- Minimalist conceptual design with patent, elegant looking with up and down dual lighting,
- brings a perfect lighting with illumination and wall decoration.
- The concise new looking perfectly blends in with the surrounding environment, bright lighting also with beautiful wall washing decor.
- Super bright 116lm/W, truly tested final output lumen.
- Scientific 140°*70° polarized light distribution with optical lens, wider lighting area.
- Two optional work modes with intelligent PIR sensor, highly stable detection, long lasting lighting time.
- Level-A mono solar panel, 21%+ high conversion efficiency, 20 years lifespan.
- Big capacity battery with over-charge and over-discharge protection, adopt brand-new battery, safe and durable.
- LG brand ABS+PC material for housing, anti-UV, V0 highest grade material for fireproof.
- Everlight brand LEDs, top quality and bright, LM80 passed, long lasting light maintenance.
- IP65 waterproof .
- Widely used for garden, entrance, fence, balcony, door gate, path, wall, building exterior, etc.

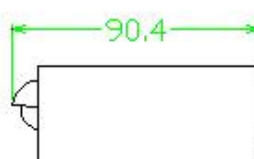
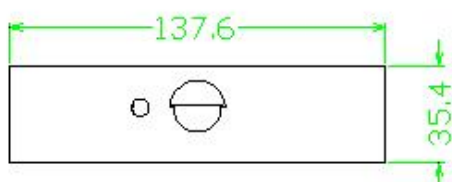
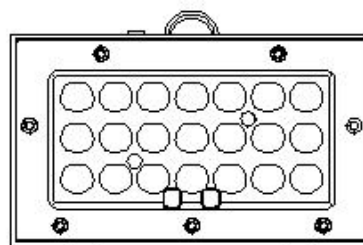
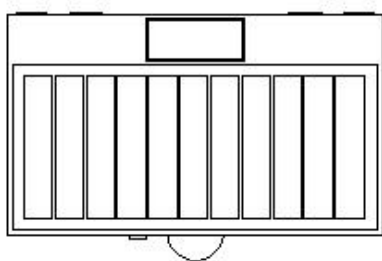
Produce Image



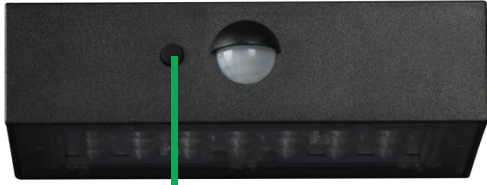
Specifications

Item No.	LD-SWL-3W-Brick	Lamp Dimension	137.6*90.4*35.4mm
Power	3W	Lumen	350LM
Solar Panel	1.15W, DC5.5V Mono-crystalline silicon	Li-ion Battery	18650, 3.7V, 1200mAh, 4.44Wh
LEDs	SMD2835*21pcs Everlight brand	CCT	3000K /4000K /6500K (Each lamp can be customized with any two CCT.)
Beam Angle	140°*70°, polarized design	PIR Sensor Range	Detection Angle: 120° Detection Distance: ≤6Mtrs
Charging Time	5-6 hours strong sunshine to fully charge	Lighting Time	35 hours
IP Class	IP65 waterproof	Installation Height	≤ 4mtrs
Housing Material	LG brand ABS+PC, anti-UV, V0 fireproof	Housing Color	Black / White
Working Temp	-20°C ~ 50°C	Storage Temp	0°C ~ 45°C
Lighting Area	50sqms	Warranty	2 years (battery 1 year warranty)
Packing Content	1 * Lamp, 2*Expansion Plugs& Screws, 1*Measure Card, 1*User Manual		

Lamp Dimension (MM)



Two Optional Work Modes



ON/OFF/Switch Work Mode

1. Press the button 1st time, the upper light flashes once, lamp enter Mode A.
2. Press the button 2nd time, the upper light flashes twice, lamp enter Mode B.
3. Press the button 3rd time, the upper light flashes 3 times, lamp turns off.

Mode A

Lamp automatically lights up at night and turns to full brightness when motion is detected in the range ≤ 6 mtrs, then dims to lower brightness (upper light on, down light on) after 10 seconds of no motion.



Mode B

Lamp automatically lights up at night and turns to full brightness when motion is detected in the range ≤ 6 mtrs, then dims to lower brightness (upper light on, down light off) after 10 seconds of no motion.







Wide Applications

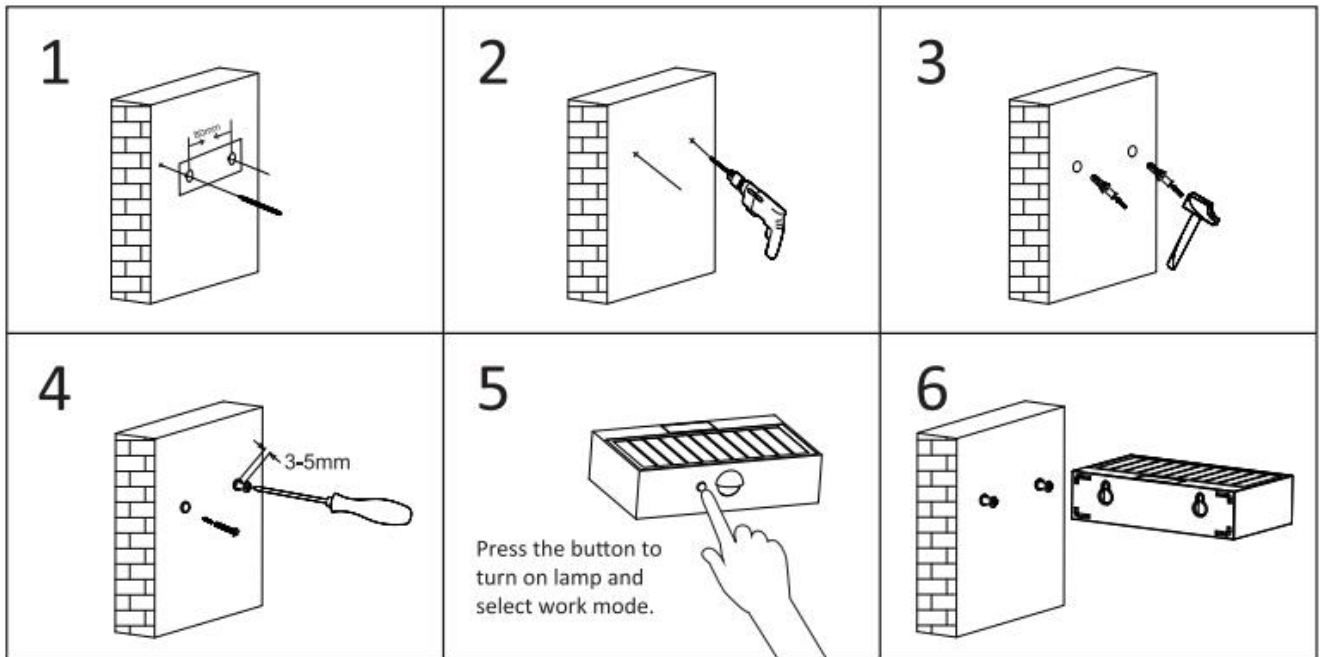
Widely used for villa, garden, entrance, yard, fence, balcony, path, door gate, stairs, garage, park, resort, hotel, campus, pathway, farm, etc.



Package Content

1PC*Lamp	2PCS*Screws	1PC*Measure Card	1PC*User Manual
			

Easy Installation



The recommended mounting height is 2~4Mtrs.

1. Please use the measure card to mark holes position.
2. Drill 2 holes($\phi 6\text{mm}$, depth 50mm) with a spacing of 80mm.
3. Fix the expansion plugs in the holes.
4. Fix the screws into the expansion plugs, allow the screws to protrude slightly around 3-5mm.
5. Turn on the lamp and set desired work mode.
6. Hang the lamp on the screws to secure it to the wall.

Cautions

1. This is a solar powered lamp, please install it in a location where can get efficient sunlight.
2. Please note the lighting time depends on sunshine duration & work mode.
3. Built-in intelligent IC is with over-charge and over-discharge protection, safe and durable.
4. When the lamp is turned off, it still can get solar charging at day time.
5. Non-professionals please do not disassemble the lamp.
6. Please do not dispose the battery with household garbage to avoid explosion.