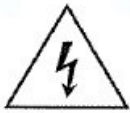




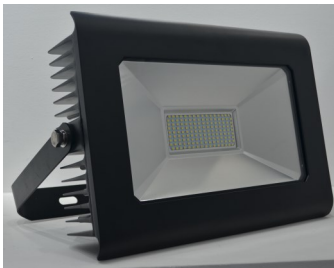
# Celsian 4S Series SMD Floodlight Instructions



Caution, risk of  
electric shock.

**IMPORTANT INSTALLATION INFORMATION** This product must be installed in accordance with the latest edition of Building Regulations and carried out by a qualified electrician in accordance with the latest IEE Wiring Regulations. Before commencing any installation or maintenance work, ensure that the mains supply is switched off and the appropriate MCB or fuse is isolated.

**MAINS WIRING** Cable colours are shown opposite.



The Celsian 4S SMD series LED Floodlights incorporate the very latest SMD (Surface Mount Device) LED chips technology. Available in 80 Watt, 100 Watt, 150 Watt & 200 Watt versions. Colour temperature, cool white (6000K) all models IP65 rated. Supply voltage 220-240VAC, 50/60Hz, 1M cable. The Celsian 4S is a Class I product and requires an earth.